



WESTWOODLEBER

WESTWOODLEBER
LET US GUIDE YOU HOME

Parrotts Field, Hoddesdon, EN11 0QU
Guide price £155,000



Parrotts Field, Hoddesdon, EN11 0QU

****CHAIN-FREE** **EXTENDED LEASE**** Westwood Leber are delighted to bring to the market this well-presented one-bedroom apartment, ideally located within the popular Parrotts Field development in Hoddesdon.

This property offers bright and well-balanced accommodation throughout, comprising an open-plan living and dining area, a fitted kitchen, a good-sized double bedroom, and a modern bathroom suite. The apartment is well maintained and presents an excellent opportunity for both first-time buyers and investors alike.

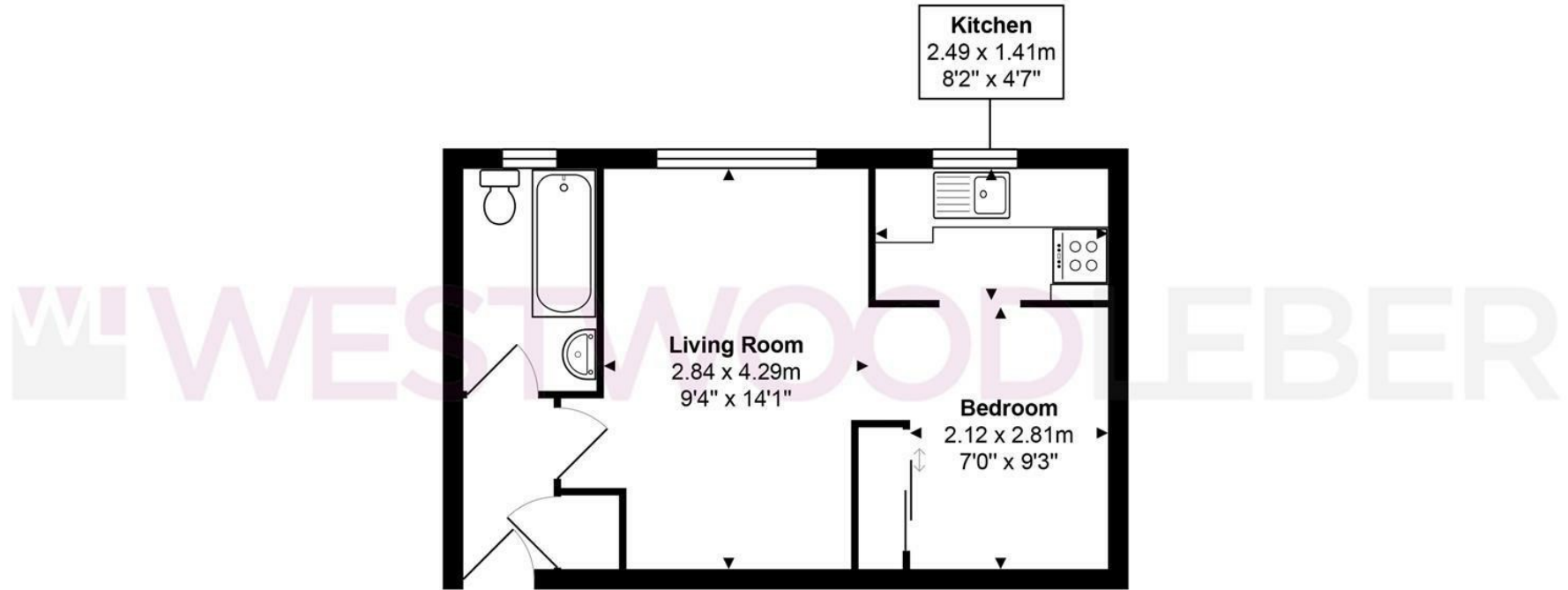
Externally, the property benefits from residents' parking and attractive communal grounds, providing a peaceful and convenient living environment.

Perfectly positioned, the apartment is just a short walk from Rye House Station, offering direct services into London, and a short stroll from Hoddesdon town centre, with its excellent range of shops, restaurants, and leisure facilities. An internal viewing is highly recommended!



W WESTWOODLEBER

W WESTWOODLEBER
LET US GUIDE YOU HOME



Total Area: approx. 29.7 m² ... 320 ft²

THE FLOORPLAN IS FOR ILLUSTRATIVE PURPOSES ONLY AND IS NOT TO SCALE.
Measurements and features are approximate and may differ from the actual property. Verify all details independently; no liability is accepted for errors or omissions.

Property marketing provided by www.fotomarketing.co.uk